



Smoke Purifier

User Manual | Benutzerhandbuch
Manual de Usuario | Manuel d'utilisation



v1.0

Contents

Safety Information	01
Package List	02
Component Introduction	02
Quick Assembly	03
Control Panel	04
Filter Replacement	05
Fuse Replacement	05
Troubleshooting	06
Technical Specifications	06
Statements	07

Safety Information

Pre-Use Checklist

1. Check if the machine has any visible damage.
2. Ensure the power switch is turned off.
3. Check whether the internal filter cartridges are in good condition.
4. Make sure the door and housing are securely assembled.

Safety Overview



1. Do not operate this product in high-temperature environments (above 60°C), high humidity, or areas with cleaning agents or oil contamination.



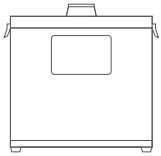
2. The power cord must be grounded during use.
3. The internal circuitry operates at up to 310V. Do not open or service the machine unless you are a qualified technician.
4. Do not insert or remove the filter while the product is in operation.



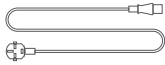
Important Safety Instructions

1. Ensure the machine operates within the specified voltage range (as labeled on the unit). Do not use the device if the voltage is too high or too low. Disconnect power if unstable voltage is detected and resume use only after stabilization.
2. During operation, the temperature of the air and dust drawn in through the intake should range from room temperature up to 50°C. Do not use the machine in environments outside this range.
3. The humidity of gases or dust drawn into the intake should be between 40%–80%. High humidity may reduce filter effectiveness. Do not operate in environments with humidity above 80%.
4. Do not use the machine without filters installed. Dust or fumes entering directly can damage internal components. Damage caused by such usage is not covered under warranty.
5. Do not continue using the machine with heavily clogged filters. Doing so may significantly reduce its lifespan or cause irreversible damage. Clean and replace filters regularly to ensure optimal performance.
6. If the suction power decreases or odors persist during continuous operation, the filters may have lost effectiveness. Do not operate without filters; replace them promptly.
7. Do not attempt to service the internal components yourself. Warranty stickers on the unit are your only proof for after-sales service. Do not remove or damage them.

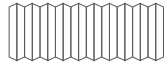
Package List



Smoke Purifier x 1



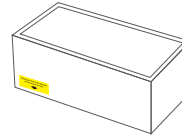
Power Cable x 1



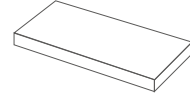
Smoke Exhaust
Pipe (2 m) x 2



Hose Clamps x 3



Filter Set x 1(Pre-installed)

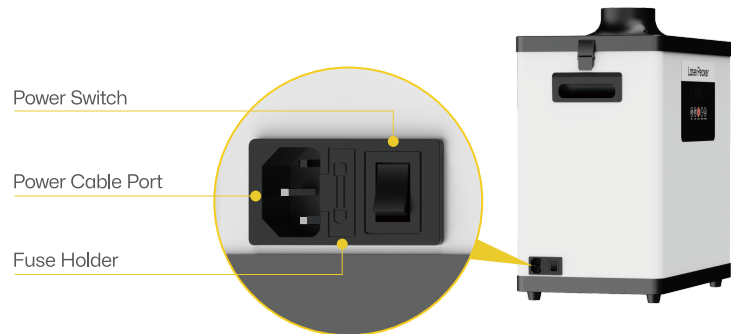
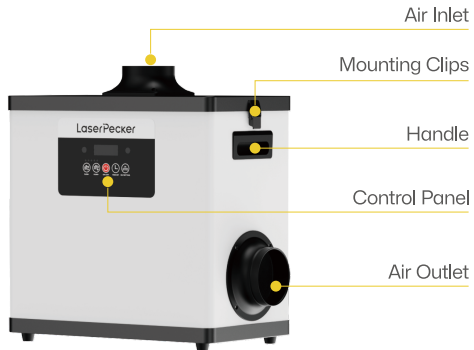


Replacement
Pre-filters x 4



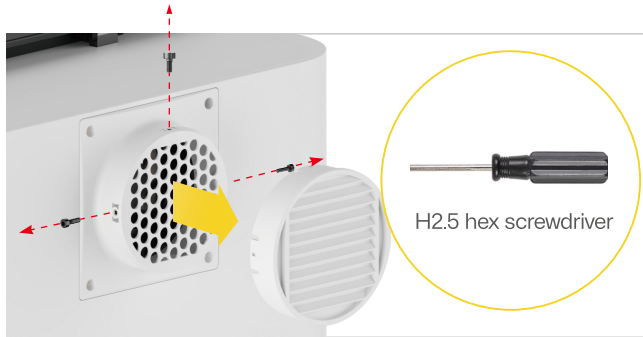
User Manual x 1

Component Introduction



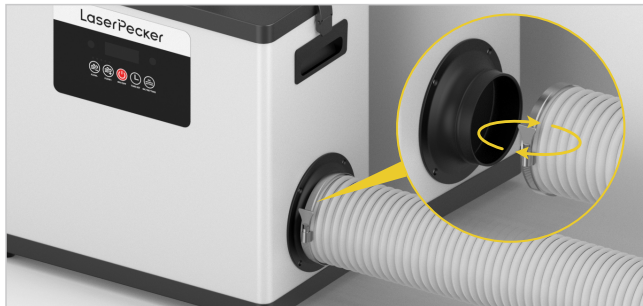
Quick Assembly

1. Use the H2.5 hex screwdriver to unscrew the 3 screws of the louver on the back of the LX2.

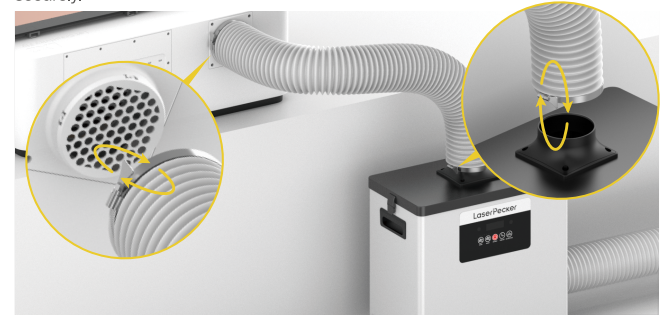


3. Insert the second smoke exhaust pipe into the air outlet of the Smoke Purifier, and secure it in place by tightening the knob.

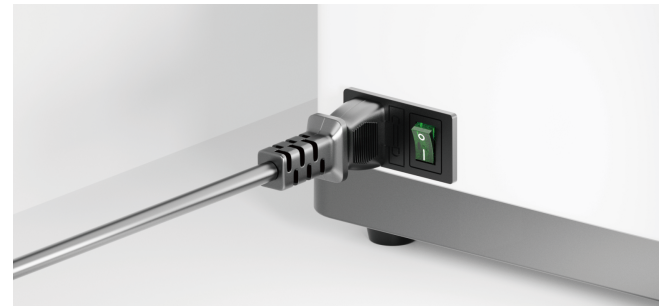
Note: For optimal airflow, keep the pipe path as straight and smooth as possible to reduce suction loss. Avoid using the device in poorly ventilated areas. Adjust the pipe length as needed, longer pipe result in weaker suction, while shorter pipe provide stronger airflow.



2. Slide one end of the smoke exhaust pipe into a hose clamp and insert it into the air inlet on top of the Smoke Purifier. Tighten the clamp using the knob. Then, slide the other end into another clamp, connect it to the LX2's smoke outlet, and tighten it securely.

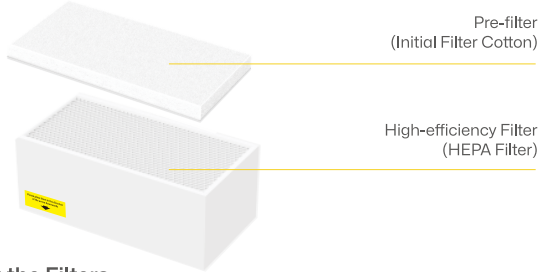


4. Connect the power cable and ensure the plug is securely inserted. Turn on the Power Switch to start using the Smoke Purifier.



Filter Replacement

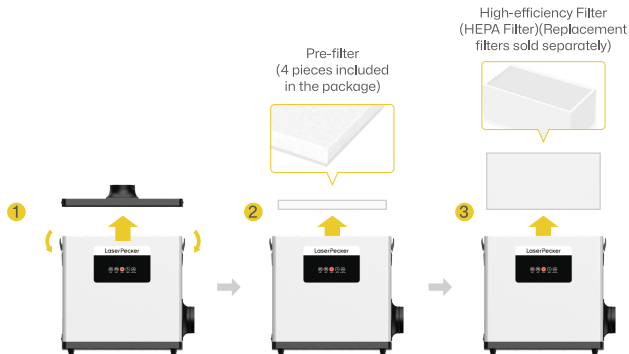
Note: Do not operate the Smoke Purifier without filters or with non-original filters purchased from unauthorized sources. Doing so will void the warranty. Please replace filters regularly as instructed, and install them in the correct order to avoid reduced performance or damage.



Replacing the Filters

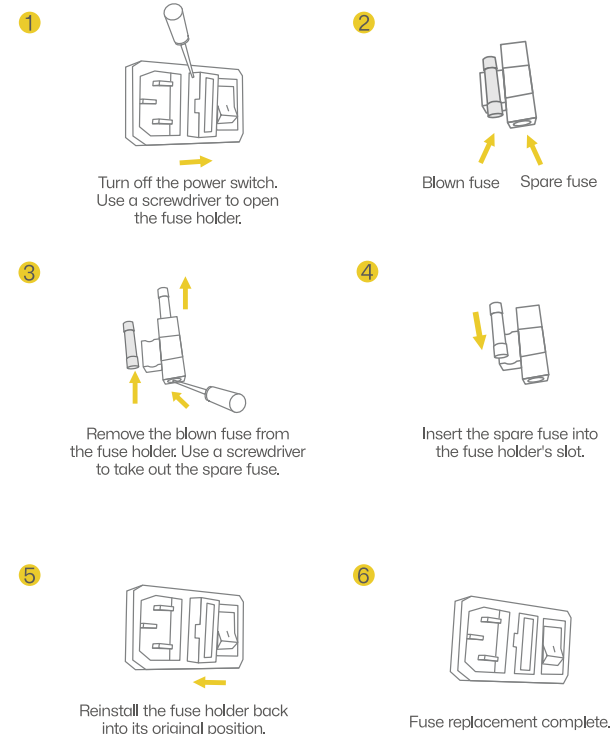
Ensure the Smoke Purifier is powered off. Open the side latches of the Smoke Purifier and remove the top cover. The filters are arranged in the following order: pre-filter followed by the HEPA filter. Remove the filter(s) that need to be replaced, then reinstall them as shown in the image.

⚠ Note: The HEPA filter must be installed in the correct orientation as indicated by the airflow label on the filter. Installing it backward may affect product performance!




Fuse Replacement

When the machine fails to operate, first check whether the power switch indicator light is off. If the indicator is off and the power supply is confirmed to be working normally, the problem may be a blown fuse. In this case, use the spare fuse located next to the fuse holder to replace the blown one. Follow these steps to replace the fuse:



Troubleshooting

 Before inspection or maintenance, always disconnect the power supply!



1

Issue: System is still running, but airflow is weak and suction power has significantly decreased.

Cause: The filter may be clogged due to excessive dust accumulation, resulting in reduced efficiency.

Check: Turn off the power and open the top cover. Check if there are any foreign objects blocking the air inlet, and then examine whether the air outlet is also obstructed. If no issues are found and the airflow remains weak after restarting the machine, the filter should be replaced.

2

Issue: The machine starts but then shuts down automatically; this issue repeats each time it is restarted.

Cause: Internal airflow is obstructed, or the filter is overly clogged, causing the fan current to exceed the limit, triggering the automatic protection mechanism.

Check: Turn off the power and open the top cover. Check whether any foreign objects are blocking the air inlet. If no issues are found after inspection and cleaning, set the speed to the lowest level, restart the machine, and then adjust it to the desired airflow setting.

3

Issue: After replacing the filter, the machine powers on normally but becomes unresponsive shortly after.

Cause: High internal temperature may trigger the device's overheat protection mode, causing the fan to stop automatically.

Check: Turn off the power and allow the machine to cool down for 5–30 minutes. Once the temperature drops to a safe level, restart the device.

Technical Specifications

Model	LX-SP	Noise Level (dB)	< 61 dB
Air Inlet Diameter (mm)	Φ115	Airflow Rate (m ³ /h)	300
Input Voltage (V)	AC110 / AC220	Dimensions (mm)	420 × 250 × 410
Maximum Power (W)	200	Weight (kg)	13
Air Speed (m/s)	23	No-load Speed (r/min)	4500
Filtration Efficiency (μm)	0.3 (99.97%)	Negative Pressure (Pa)	2200

Statements

Disclaimer

Thank you for choosing LaserPecker! This manual relates to your safety, legal responsibilities and rights. Please read and get familiar with all safety precautions and procedures before using the product. If you do not use the product according to the instructions and requirements of the manual, or mis-operate the product due to misunderstanding, etc., LaserPecker (Hingin Technology Co., Ltd.) shall bear no responsibility for any loss resulting therefrom.

Given the conditions and methods of use of this product are beyond the control of LaserPecker, LaserPecker shall not be liable for any of the following consequences, which shall be borne by the user:

- Personal injury, property loss, and product damage caused by improper operation, failure to follow the manual or other uncertainties.
- The work that user created using the LaserPecker product infringes intellectual property rights of the third party or violates relevant laws and regulations.
- Personal injury, property loss, and product damage that may arise during the installation, transportation, storage, use, maintenance, and disposal of this product.
- All official LaserPecker materials have undergone safety testing and are compatible with this product. LaserPecker shall not be liable for material safety or engraving quality if the user uses non-LaserPecker official materials.

Copyright

- Copyright of this manual, as well as the rights to the software and hardware related to this product, are owned by Shenzhen Hingin Technology Co., Ltd. (hereinafter referred to as "Hingin Technology"). LaserPecker is a registered trademark of Hingin Technology.
- The information in this manual may be changed without notice; The information in this manual does not constitute a commitment of the Company. Please learn about the latest update from(<https://www.laserpecker.net>). The contents of this manual shall not be rewritten or forwarded in any form or for any purpose without the written permission of the Company.

LaserPecker