



LaserPecker 4

User Manual | Gebrauchsanweisung | Manual de Usuario | Guide de l'utilisateur



English 01

Deutsch 21

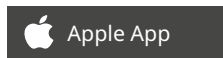
español 41

Français 61

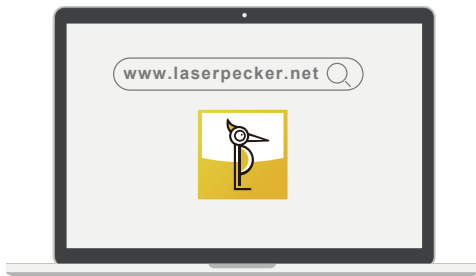
APP/PC Software Download

- 1 Scan the QR code to Download the Android or iOS APP

NOTE: After installing the APP, please read all warnings and instructions carefully to ensure safety and the correct operation of the product



- 2 Download the Windows/Mac software from the Official LaserPecker website.



After-Sales Services

- Technical support for this product is available globally. Please contact us if you encounter any problems with your LP4 and we will get back to you as soon as possible.
- Email: support@laserpecker.com

Online User Community

- LaserPecker's huge online global community connects our diverse group of dedicated users and offers support, inspiration, and a showcase for sharing creativity.
- Facebook: LaserPecker 4



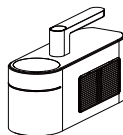
LaserPecker 4
VIP Group

Contents

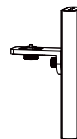
List of Included Parts	02
Component Overview & Instructions	03
Electric Stand Assembly	05
Attaching the Laser Safety Shield	06
Connecting Components	07
Control Interface Options	08
Focal Ranging Methods	09
Touch Screen Function	10
Oblique Positioning	12
Attaching Alignment Fixtures	13
Machine Maintenance	14
Product Specifications	15
Safety Instructions	16
Disclaimer & Copyright	18
Warranty Terms	19

List of Included Parts

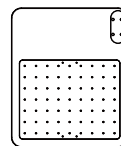
Laser Unit *1



Electric Stand *1



Base Plate*1



Safety Cover *1



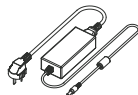
Safety Goggles *1



Cable Organizer Clip *1



AC Cord *1
& Power Adapter *1



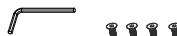
Alignment Fixtures
& Screw *4



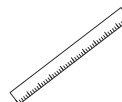
1m Cable *1
& 0.6m Cable *1



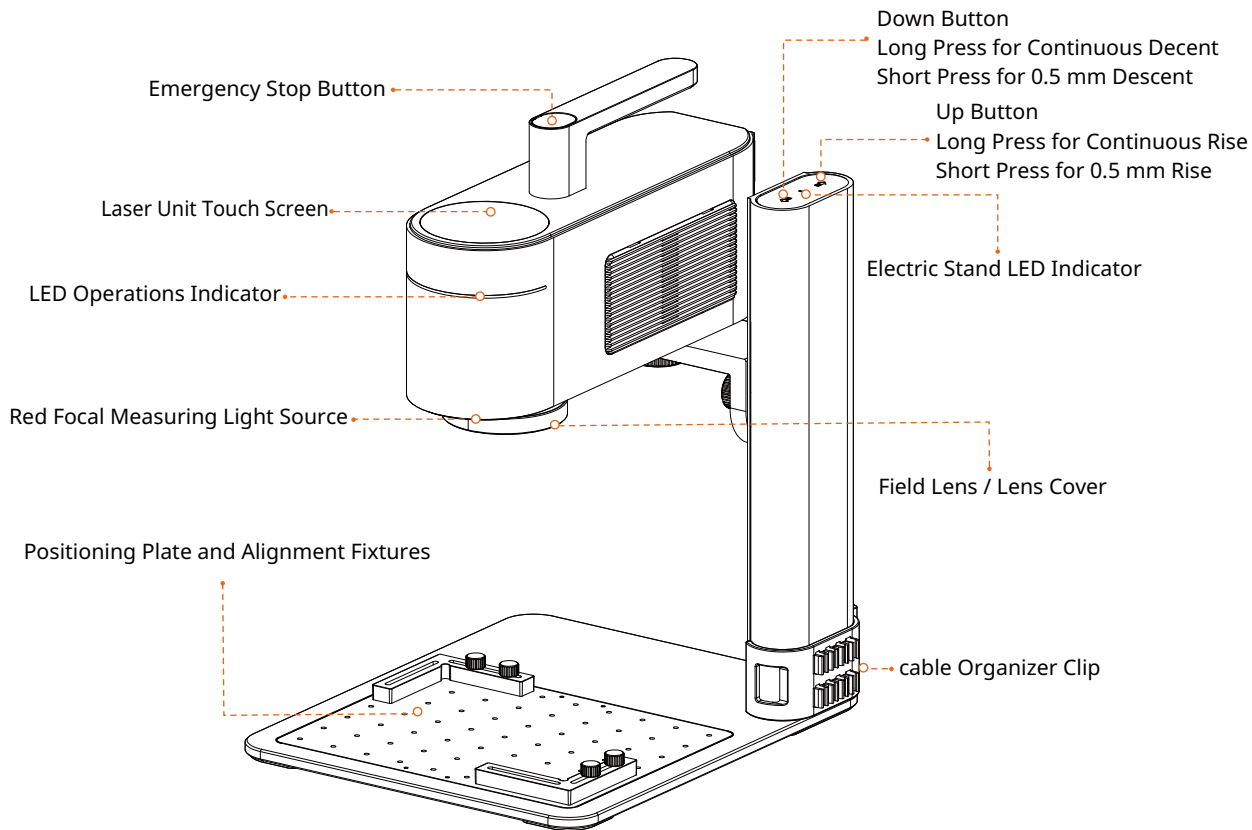
Wrench M2.5 *1 &
Screw M4X10 *4



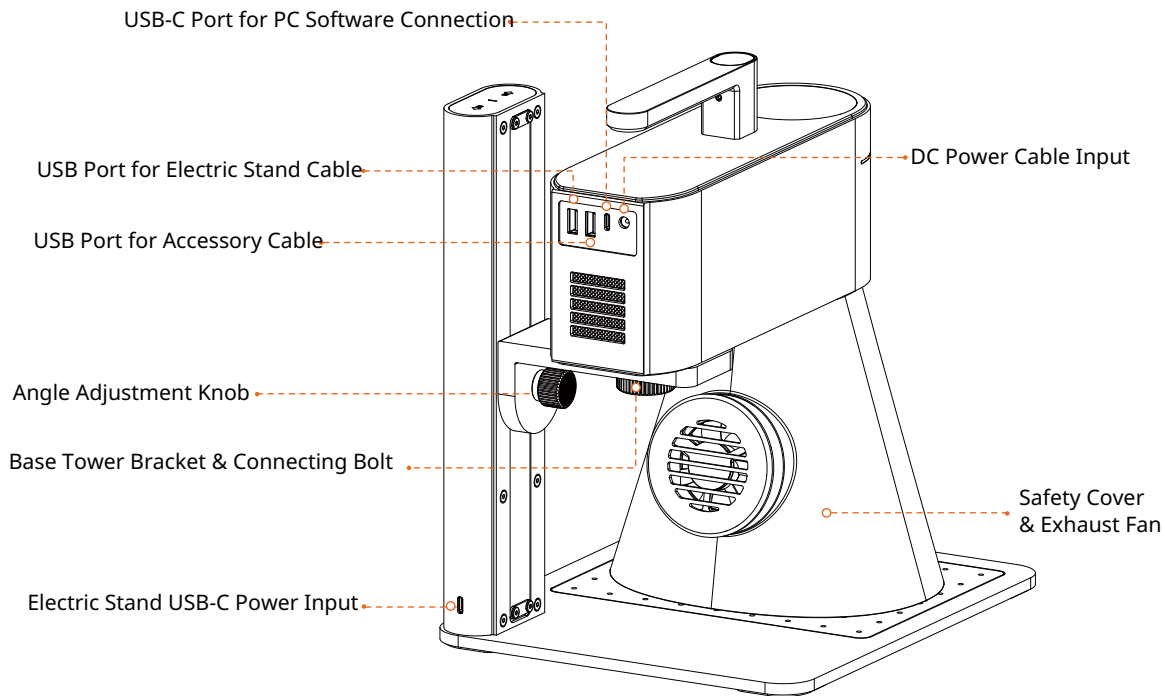
Ruler *1



Component Overview & Instructions

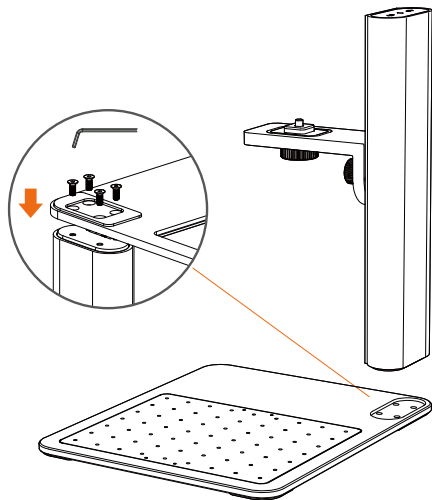


Component Overview & Instructions

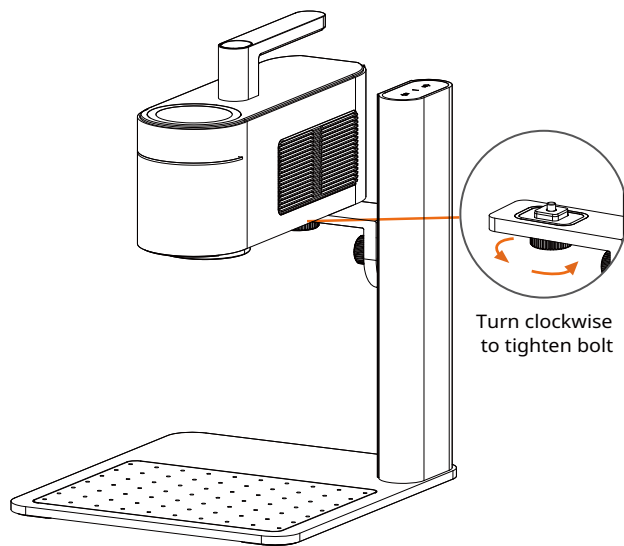


Electric Stand Assembly

- 1 Attach the tower to the base unit using the wrench and 4 screws.

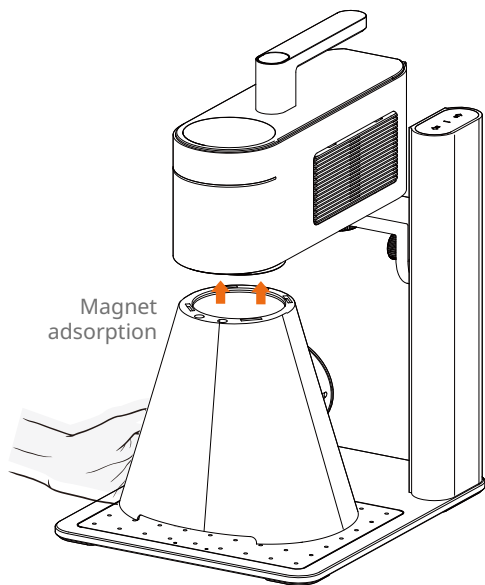


- 2 Attach the Laser Unit to the Electric Stand by aligning the underside threads with the bracket and securely tightening the knob.

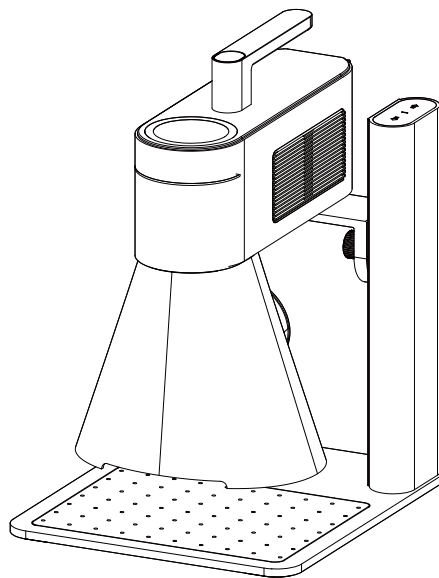


Attaching the Laser Safety Cover

- 1 Place the Laser Cover under the Field Lens and gently guide it upwards until it attaches magnetically to the Laser Unit.

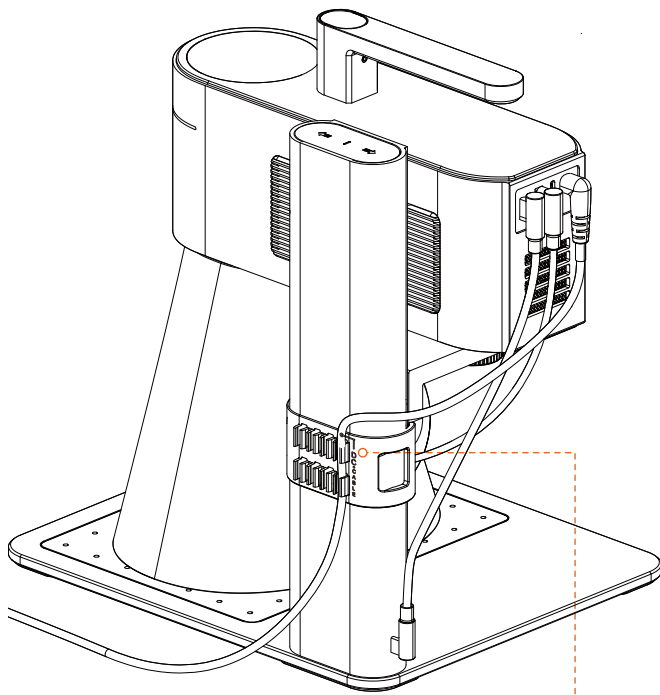


- 2 Safety Cover in position.

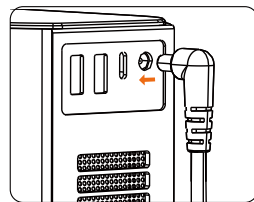


Connecting Components

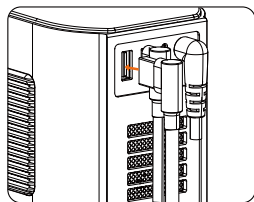
Connecting Components & Organizer Clip



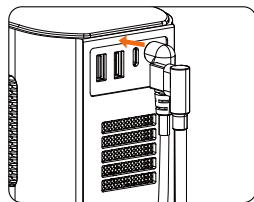
Put the Power Adaptor cord into the first DC port slot, and use the rest to organize other cables.



Connect to power supply with the AC Cord & Power Adapter



Connect to Safety Cover & Exhaust Fan

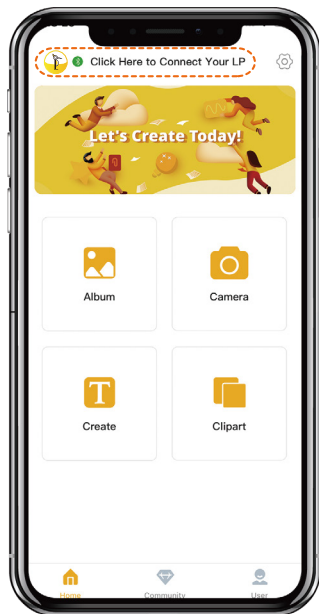


Connect to Electric Stand with the 0.6m USB-C Cable

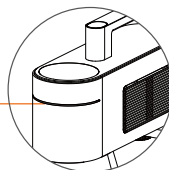
Control Interface Options

• Mobile APP Connection

After assembling the device and power on, open the official application LaserPecker Design Space(LDS) and connect the device in the APP.



LED Operations Indicator



• PC Software Connection

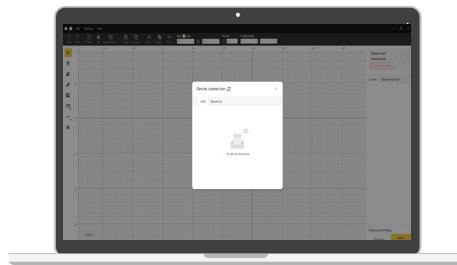
After assembling the device and powering it on, open the official PC Software LaserPecker Design Space. Connect the device to the PC software via USB cable or official Bluetooth dongle, and search LaserPecker 4 for connection.

Connection I

Via USB cable

Connection II

Via Bluetooth dongle

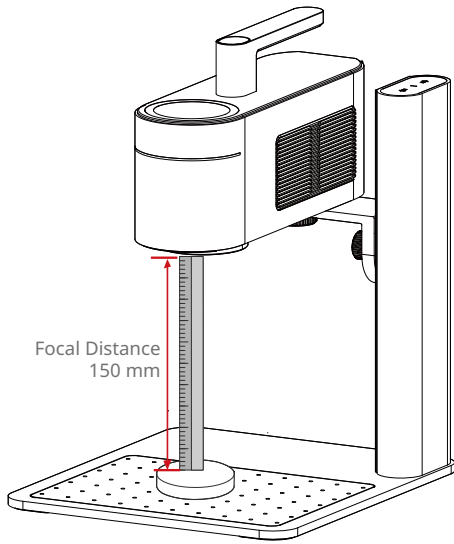


- Blinking Blue: Waiting for Bluetooth Connection
- Solid Blue: Bluetooth is Connected
- Streaming Green: Data is Transmitting
- Multi Color: Job in Progress

Focal Ranging Methods

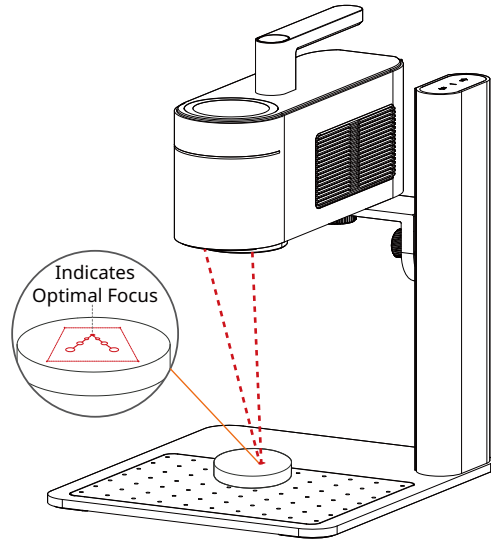
- Measurement Focusing

To set the focal range by distance, raise or lower the Laser Unit with the Electric Stand controls until the underside measures 150 mm from the top of the material to be worked on.

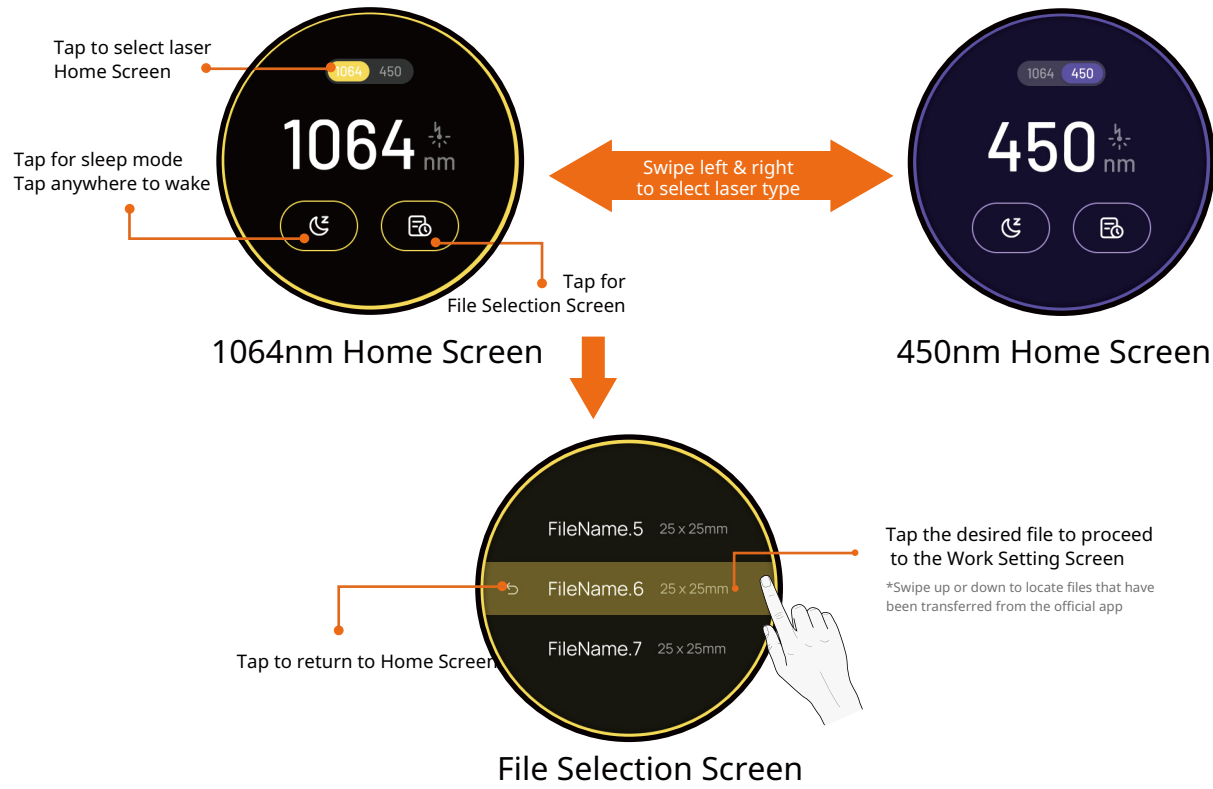


- Red Dot Focusing

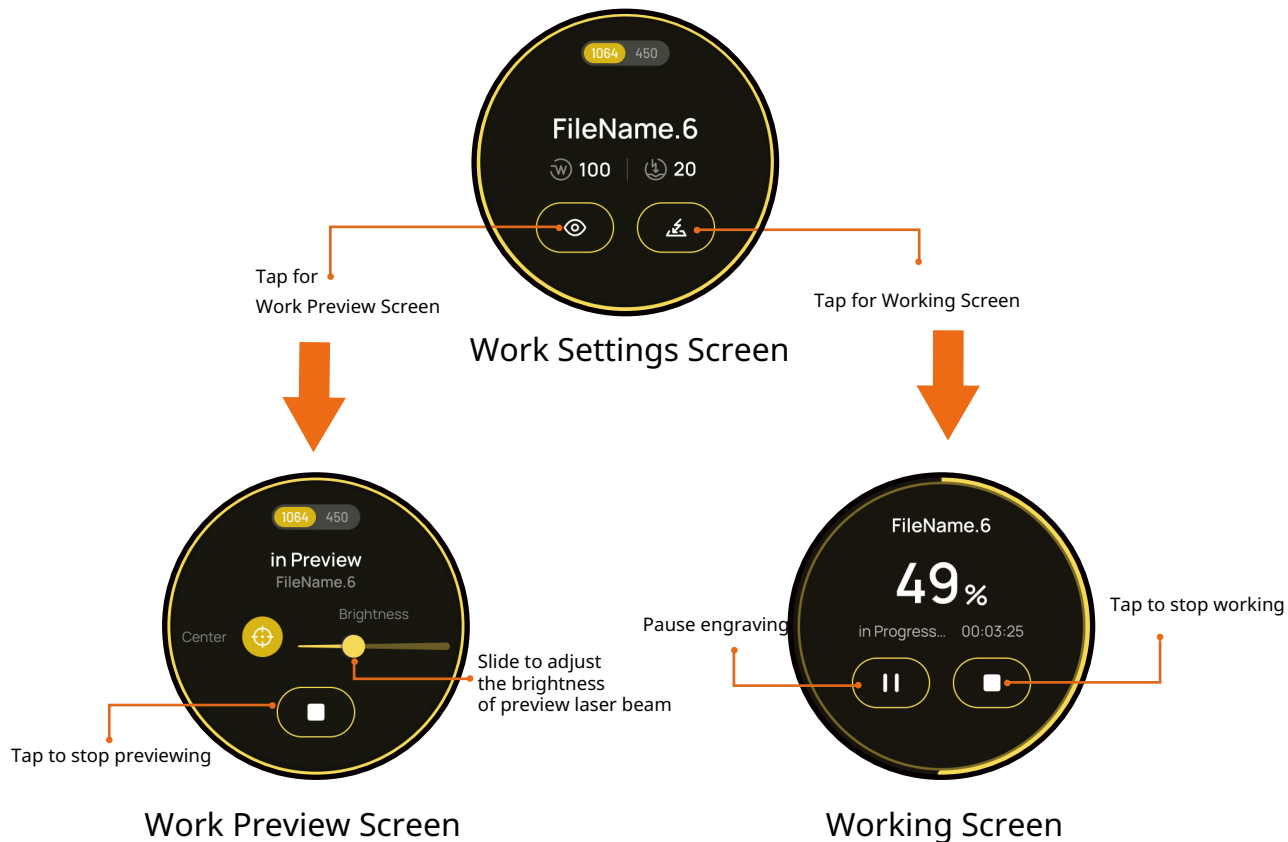
While in Preview Mode on the Mobile App or PC Software, set the focal range by adjusting the height of the Laser Unit until the 2 red dots align into 1 or touch each other on the surface of the material to be worked on.



Touch Screen Functions

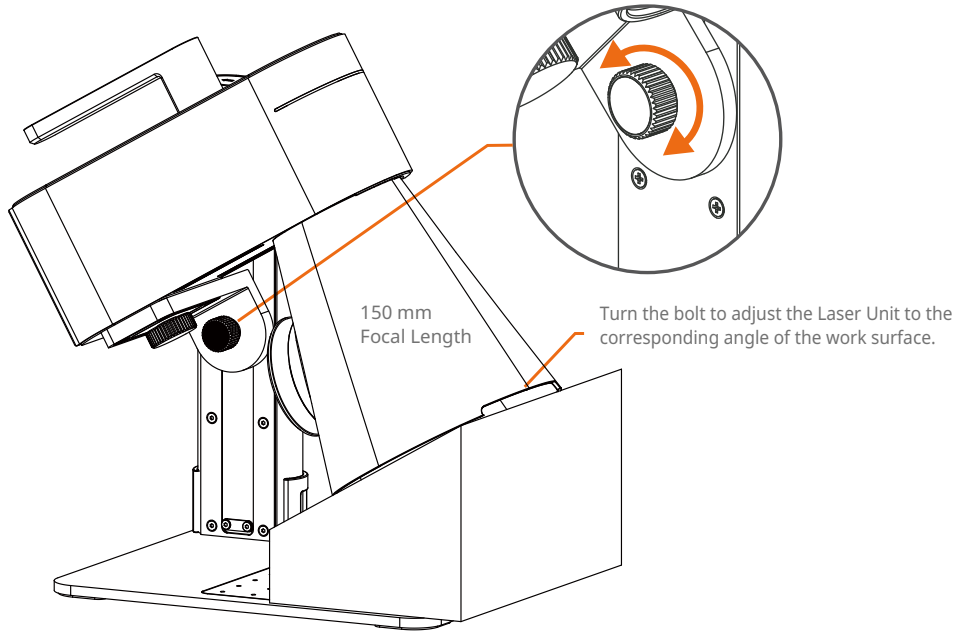


Touch Screen Functions Continued



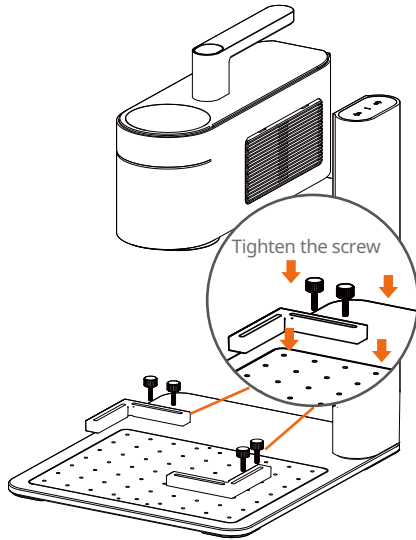
Oblique Angle Positioning

Use the Angle Adjustment Knob to position the Laser Unit for working on an angle.

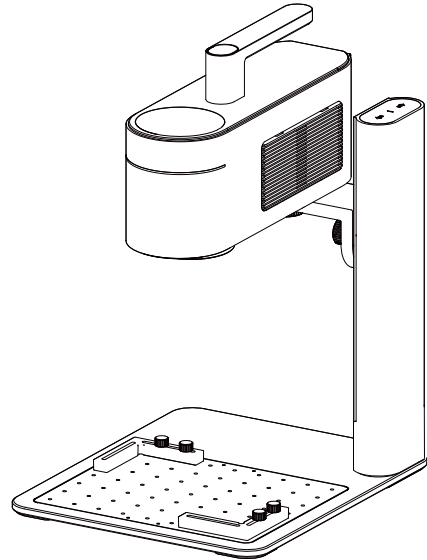


Attaching Alignment Fixtures

- 1 To secure materials during engraving and for accurate repeat placement, position the Alignment Fixtures to the desired location on the base plate and attach them by tightening the screws.



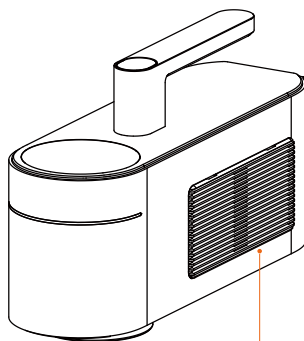
- 2 Example of attached Alignment Fixtures



Machine Maintenance

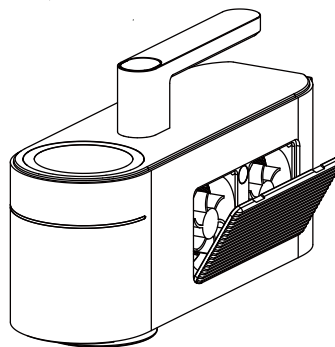
- The Laser Unit's dust screen is attached magnetically for easy cleaning.

Original status of the Magnetic Dust Screen. Power off the Laser Unit before you clean the screen.



Magnetic Dust Screen

Remove and clean the screen frequently to help maintain the optimal operating condition.



Take care to ensure that moisture or foreign objects do not get inside the Laser Unit while the screen is removed.

Product Specifications

Size	Laser Unite: 241*82.1*139.7mm Electric stand: 260.5*218*283.5mm protective cover size: 176*145*155.7mm
Weight	Laser Unite: 2.2kg Electric stand: 1.8kg Total weight: 4kg
Laser source	1064nm Pulsed Laser 450nm Diode Laser
Engraving area	160*120mm (ellipse) 100* 100mmmm (square);
Appearance	Anodic oxidation of aluminum alloy
Document transmission	USB cable and Bluetooth wireless transmission
Supported document format	PC Software: BMP/ JPG/ PNG/ SVG/ G-code Mobile APP: JPG/PNG/G-code/SVG
APP & software connection	Bluetooth connection, USB connection (2375~2525MHz)
APP operating system	Support iOS 9.0+, Android 6.0+, MacOS 10+, Windows 10+
Power input	DC(24V,5A),AC(100-240V,50-60Hz)
Operating temperature range	15°C-65°C
Operating humidity range	5%~80%RH
Safety certification	IEC 60825-1, CE, ROHS, FCC, FDA,CDRH registration , NCC, KC, UKCA, TECLEC
Pulse width	50us
Repetition frequency	15kHz ~ 20kHz
Wavelength	1064nm
Maximum single pulse energy	about 20kW

Safety Instructions

1 General Safety Instructions

- The usage and specific application of this product, and emissions generated by engraving shall be subject to the laws and regulations in the country where the user is located.
- Please use and maintain the product in accordance with the manual instructions to ensure safe operation.
- Do NOT place the product in a rainy or damp environment.
- Please prepare a stable and flat table or workbench for this product.
- Minors of any age should NOT operate the product without adult supervision and assistance.
- Please concentrate and pay close attention to operation process and changes in the surrounding environment during use.
- Do NOT operate the product when feeling fatigued.
- When the product is in operation, please do NOT touch the moving part, otherwise it may spoil your material.
- Do NOT leave the machine unattended during operation.
- Caution - Use of controls or adjustments or performance of procedures other than those specified herein may result in hazardous radiation exposure.
- The laser radiation level emitted by the provided laser aperture exceeds Class 1.

In case of the following situations, please stop using the product and cut off the power supply immediately.

- The product has a smell of burning odor.
- The engraved material generates a large amount of smoke or open flames.
- The internal components of the product have been damaged.
- The product stops working accidentally.
- The product generates unprecedented abnormal noise or light.

2 Laser Engraving Instructions

- Installation specification: Before operation, please secure the main unit based on the user manual. Please place the product on a stable and flat table or workbench. The vibration of the machine will affect the engraving quality.
- Due to the risks of laser, do NOT bring minors or people without self-protection awareness close to the device in operation.
- Before laser engraving, you should have adequate knowledge of: physical properties of laser radiation, hazardous classification of laser and relevant health implications and safety measures.
- During laser engraving, do NOT look directly at or touch the laser aperture, or expose your body to the laser.
- During operation, the material being engraved or cut may release toxic and harmful gases or smoke. Please make a comprehensive judgment based on the type and composition of the material. It is recommended to use the product with an air purifier or in a well-ventilated place, so that the toxic and harmful gases or smoke generated can be effectively adsorbed, thus protecting your health and preventing environmental pollution.
- Reflective materials can cause laser reflection and injury. Please remove all reflective materials from the work area before use and during operation. It is suggested to blacken the area to be engraved by a whiteboard marker beforehand when engraving the reflective material.
- Please power the device with the power and type (12V---5A power adapter) indicated in the user manual. Mismatched power adapter will cause malfunction.
- Before laser engraving, please make sure to take safety protection measures, such as wearing safety goggles to prevent eye or skin injury, removing irrelevant objects to prevent damage caused by laser radiation, and moving away flammable and explosive objects to avoid fire.
- After initiating engraving, do NOT move the device, otherwise it may trigger emergency stop as the gyroscope detects the machine inclination, therefore affecting the final engraving result.

3 Emergency Response

• Please take the following measures when there is open fire during engraving

- (1) Cut off the power supply.
- (2) Douse the flames with fire extinguisher.

• Inhale smoke and particulate matter

- (1) Smoke and particulates that can irritate the respiratory system may be generated when engraving or cutting certain materials. It is recommended to use the product with an air purifier or in a well-ventilated place. Please wear a protective mask if necessary.
- (2) If respiratory irritation or similar symptoms occur, immediately move the patient to a site with fresh air and seek medical help.

Disclaimer

Thank you for purchasing LaserPecker 4. This manual relates to your safety, legal responsibilities and rights. Please read carefully and understand the manual before use. Failure to follow the instructions in the manual may result in personal injury, poor engraving result, or damage to the device and surrounding objects. Please make sure the product operator understands and is familiar with the manual. Using this produce shall be deemed to have carefully read the full text of the product manual, and to understand, acknowledge and accept all the terms and conditions of Disclaimer. Personal injury, property or product damage caused by the user's improper operation or failure to operate according to this user manual shall be borne by the user, and Shenzhen Hingin Technology Co., Ltd. shall not be held responsible. You accept full responsibility for the use and possible consequences of this product.

Given the conditions and methods of use of this product are beyond LaserPecker's control, the consequences of any of the following circumstances shall be borne by the user and LaserPecker shall not be held responsible:

- Personal injury, property or product damage caused by improper operation, failure to follow instruction manual or other uncertainties.
- The work that user created by LaserPecker products infringes the intellectual property rights of the third party or violates the relevant laws and regulations.
- Personal injury, property or product damage arise during installation, carry, storage, usage, maintenance and disposal of this product.
- All official LaserPecker materials have undergone safety testing and are compatible with this product. LaserPecker shall not be liable for material safety or engraving quality if use with non LaserPecker official materials.

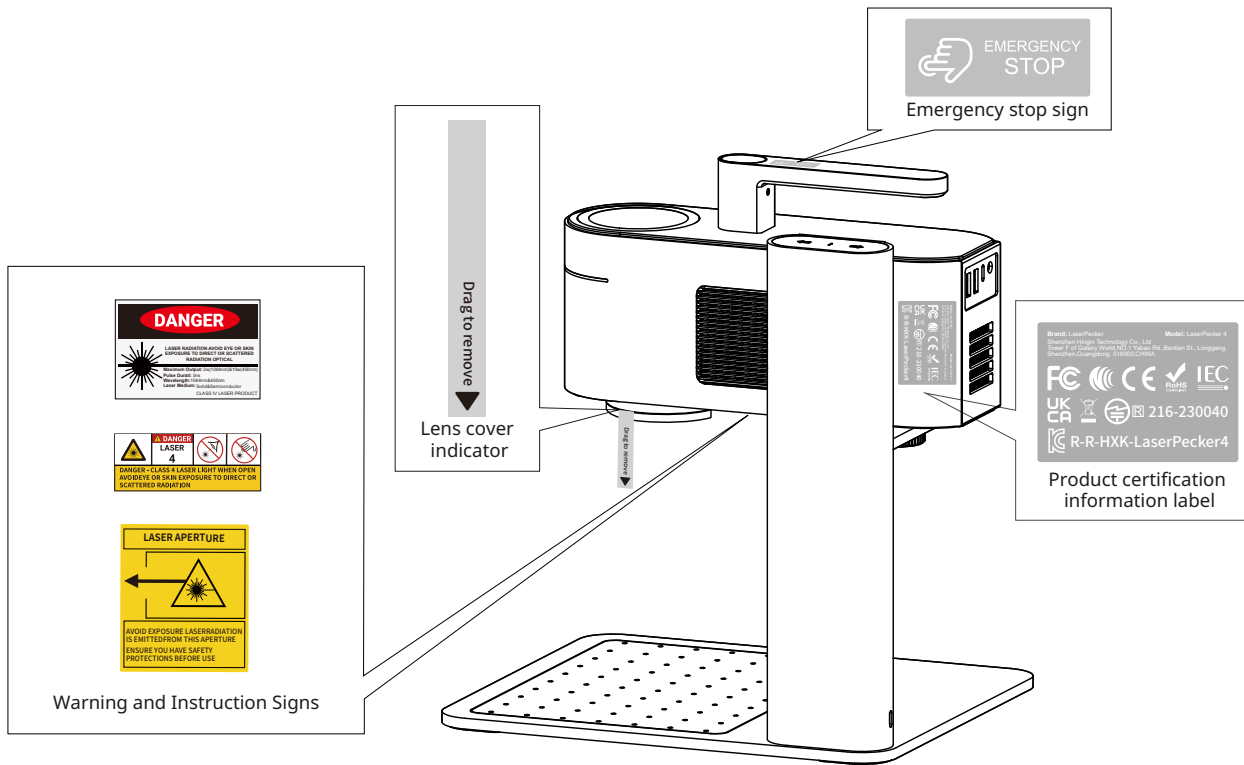
Copyright

- The copyright of this manual is the right of the software and hardware involved in the product, which belongs to Shenzhen Hingin Co., Ltd. (hereinafter referred to as "Hingin"). LaserPecker is the registered trademark of Hingin.
- The information in this manual may be changed without notice; The information in this manual does not constitute a commitment of the Company. Please learn about the latest update from <https://www.laserpecker.net>.
- The contents of this manual shall not be rewritten or forwarded in any form or for any purpose without the written permission of the Company.

Warranty Terms

- To the extent permitted by law, this warranty is exclusive and supersedes all other express or implied or legal warranty conditions (including in any case for a particular purpose, provided by the statute or any other circumstance), including, but not limited to, any liability derived the commodity suitable for a particular use. In addition, Hingin will not be responsible for any unexpected, special, indirect, or derivative damage (it may originate from use, misuse, nonuse, or product defects).
- When applying for warranty service, please back up all the important data in advance. The data will disappear during the maintenance process, such as replacing parts or updating the product software, and Hingin will not provide data backup or the complete data and set value.
- The product is entitled to free shipping and free maintenance warranty within 7 days of the shipping date. Express fee shall be charged after 15 days of the shipping date to the warranty period.
- For any products following the replacement or maintenance, Hingin will give a longer warranty of the remaining warranty period of the original product or the 30-day warranty following the replacement.
- When consumers apply Hingin for warranty services for the products sold in non-Chinese mainland areas, due to the laws and regulations, safety regulations, tariffs, maintenance technology and parts inventory, parts sold in countries and regions cannot be sent back to Hingin for warranty services, for which Hingin can only provide limited warranty services. Therefore, consumers living outside of mainland China, whether they are within the warranty scope, need to seek warranty services through the channel authorized by the original country, and will charge the inspection and labor processing fees. If the country where the recipient is located levies additional tariff, it will be borne by the consumer himself; Consumers who apply for warranty service directly to Hingin may follow the similar procedures.
- Distributors may sell Hingin products to consumers in non-Chinese mainland areas. If they provide value-added services different from this warranty, the services are valid only for the area sold by distributors and unrelated to this warranty service.
- Processing quality is highly related to user operation, processing material and processing environment, not within the warranty scope.
- Reselling the product without official authorization is strictly prohibited, in which case the official warranty shall not be eligible.

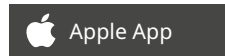
Recognize labels



Download zur APP/PC-Anwendung

- 1 Laden Sie die Laserpecker App aus dem App Store (iOS-Geräte) oder von Google Play (Android-Geräte) herunter und installieren Sie die Mobile App.

HINWEIS: Nachdem Sie die APP heruntergeladen und installiert haben, lesen Sie sich bitte die Punkte zu den Warnhinweisen und Vorsichtsmaßnahmen in der APP sorgfältig durch, um sicherzustellen, dass Sie dieses Produkt ordnungsgemäß benutzen können.



- 2 Laden Sie die Anwendung Laser Pecker Design Space für den PC von der Homepage <https://www.laserpecker.net/pages/software>, herunter.



Kundendienst

- Wir verfügen über einen globalen technischen Online-Support für dieses Gerät. Sollten Sie Probleme bei der Nutzung dieses Gerätes haben, können Sie sich jederzeit an uns wenden. Wir werden uns so schnell wie möglich bei Ihnen zurückmelden.
- Email: support@laserpecker.com
- Facebook: LaserPecker 4



LaserPecker 4 VIP Group